



FUEL TRANSFER-METERING-STORAGE EQUIPMENT ESSENTIALS

NEW

ALEMLUBE LARGE LOCKABLE DIESEL REFUELLING, STORAGE & DISPENSING KITS

- 1200L, 1,000L & 800L storage tank capacity
- Forklift lift points and tie down capability
- Heavy duty, robustly constructed polyethylene tank
- Lockable lid aids diesel fuel security & protects dispensing kit components
- Automatic shut off fuel nozzle



Part Number	Capacity	Flow Rate
L120080PA	1,200L	80L/min
L100080PA	1,000L	80L/min
L80080PA	800L	80L/min
L120040PA	1,200L	40L/min
L100040PA	1,000L	40L/min
L80040PA	800L	40L/min

ALEMLUBE LOCKABLE DIESEL REFUELLING, STORAGE & DISPENSING KITS

- Dispensing kit consists of a 12V pump, antistatic fuel delivery hose, 2 metre battery cables & auto nozzle
- Lockable lid aids diesel fuel security & protects dispensing kit components
- Suits all marques of single & twin cab utes
- Heavy duty, robustly constructed polyethylene tank
- Forklift lift points & tie down capability
- Built in nozzle holster



Part Number	Capacity	Flow Rate	W/Meter
L10040PA	100L	40L/min	—
L10040PAM	100L	40L/min	√
L20040PA	200L	40L/min	—
L20040PAM	200L	40L/min	√
L45040PA	450L	40L/min	—
L45040PAM	450L	40L/min	√
L60040PA	600L	40L/min	—
L60040PAM	600L	40L/min	√

ALEMLUBE FUEL TANK FILTERS

- Suitable for use with diesel & petrol
- Removes water & particles
- Filtration down to 5 micron
- Includes 1 x filter head and 1 x filter element

611200

PIUSI FUEL TANK FILTER

Flow rates of up to 100L/min with a maximum pressure 50psi (3.5bar)

611110

PIUSI 1" DIESEL FILTER WITH STEEL BOWL

Flow rates of up to 150L/min with a maximum pressure 50psi (3.5bar)

611100

PIUSI 1" DIESEL FILTER WITH STEEL BOWL

Flow rates of up to 70L/min with a maximum pressure 50psi (3.5bar)



ALEMLUBE

ELECTRONIC OVAL GEAR FLOW METERS

- Can be installed horizontally or vertically
- 5.5-digital sub-total with floating point from 0.01 to 9999.99 & 7-digital non-resettable totaliser
- 3.6V lithium battery powered

AOGM-040E / AOGM-040M

ALEMLUBE OVAL GEAR FLOW METERS

Flow rates of up to 250L/min with a maximum pressure 260psi (18bar)

AOGM-050E / AOGM-050M

ALEMLUBE OVAL GEAR FLOW METERS

Flow rates of up to 300L/min with a maximum pressure 260psi (18bar)



*Applies to the vast majority of Alemlube products unless indicated otherwise



- 50056**
240V DIESEL FUEL DISPENSER
- Flow rates from 56L/min
 - Accurate to ±1%
 - Noise level below 75dB
 - IP55 Protection
 - Automatic nozzle with swivel connection
 - AC/DC versions available



- 50070**
240V DIESEL FUEL DISPENSER
- Flow rates of up to 70L/min
 - Facilitates quick, secure & safe fuel transfer for non-commercial users
 - 30 mins duty cycle, IP 45 protection grade
 - Complete with self priming vane pump, meter, intake filter, 4m of antistatic delivery hose, automatic shut off nozzle, support bracket & built in nozzle holster



- 50090**
240V HIGH FLOW DIESEL FUEL DISPENSER
- Flow rates of up to 90L/min
 - Facilitates quick, secure and safe fuel transfer for non-commercial users
 - 30 mins duty cycle, IP 45 protection grade
 - Complete with self priming vane pump, 4-digit mechanical meter, 4m of antistatic delivery hose, & an automatic shut off nozzle with swivel connection



- 51090**
240V SMART FUEL DISPENSER
- Automatic nozzle with flow rates of up to 70L/min
 - Can be interfaced with fleet management systems
 - Accurate to ±0.5%
 - Continuous AC operation with IP55 protection
 - 240V, voltage 850 Watt, Amp. maximum 4.2
 - Noise level below 75 dB
 - Hose length of 4m



- 212000**
12V DIESEL REFUELLING SYSTEM
- Integrated dual 12V pumps deliver up to 45L/min
 - Hose reel supplied complete with 15m x 3/4" ID hose
 - Versatile, compact & easy to install pump, reel, filter & auto shut off nozzle kit simplifies diesel fuel transfer
 - Pump duty cycle of 30 mins on, 30 mins off
 - Suitable for mobile or fixed tanks
- 213000** as above but 24V

REFUELLING & DIESEL TRANSFER PUMPS



FUEL TRANSFER METERING STORAGE EQUIPMENT ESSENTIALS



- 395050**
240V HEAVY DUTY HIGH VOLUME DIESEL TRANSFER PUMP
- True flow rate of 140L/min at end of hose & auto nozzle
 - Suitable for the transfer of diesel
 - Continuous duty operation
 - Sintered steel rotor & acetal resin vanes
 - Self-priming
 - Thermal motor overload protection



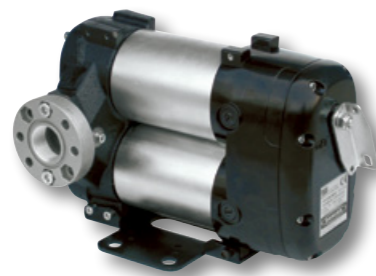
- 326000**
240V HIGH VOLUME DIESEL FUEL TRANSFER PUMP
- Flow rates of up to 100L/min
 - 1" BSP inlet/outlet
 - Vane type pump with sintered steel rotor & acetylic resin vanes
 - Continuous duty operation
 - Sturdy cast iron construction
 - Suitable for the transfer of diesel fuel



- 732000**
240V DIESEL FUEL TRANSFER PUMP
- Vane type pump with sintered steel rotor & acetylic resin vanes, flow rates of up to 72L/min
 - Continuous duty operation
 - Built in 100 micron filter is easily accessible
 - 1" BSP(f) inlet/outlet
 - Cast iron, paint finished pump housing is weather resistant
 - Ideal for diesel fuel transfer out of bulk tanks where 240V power is available



- 730000**
240V DIESEL FUEL TRANSFER PUMP
- Rotary vane type pump
 - Capable of flow rates of up to 56L/min
 - Continuous duty operation
 - Integral bypass valve included as standard where 240V power is available



**52004-3AC
12V HIGH FLOW
DIESEL TRANSFER KIT**

- Flow rates of up to 85L/min
- Powerful self-priming, rotary vane, positive displacement bi-pump
- 1" BSP(f) flanged connections
- Supplied complete with suction hose, delivery hose, filter, foot valve and auto shut off nozzle

52005-3AC as above but 24V

**52004A
12V HIGH VOLUME
DIESEL DRUM PUMP**

- Flow rates of up to 80L/min
- 1" BSP(f) inlet/outlet
- Telescopic down tube suits fuel tanks up to 1,000mm deep
- Heavy duty cast iron housing protects the dual motors & the pump head assembly
- Self priming vane pump with sintered steel rotor & acetyl resin vanes
- Includes an automatic shut off nozzle
- Suitable for diesel fuel transfer only

5200A as above but with manual nozzle



**52000A
12V DIESEL REFUELLING TANK KIT**

- Capable of flow rates of up to 50L/min
- Includes 4m of antistatic fuel delivery hose, 2m of battery cable, a stainless steel & brass fuel filter & an automatic shut-off nozzle
- Maximum head capacity of 15m
- Suction capacity of up to 2m

52001A as above but 24V



**52040
12V SELF PRIMING
DIESEL FUEL TRANSFER PUMP**

- Flow rates of up to 50 L/min
- Self-priming 12V electric pump with on/off switch
- Maximum working pressure of 22psi (1.5 bar)
- Sturdy handle for convenient portability
- BSP inlet & outlet connections
- Power: 300 Watt : 2,900 rpm

52041 as above but 24V



**381020
12V PETROL & AVGAS TANK PUMP
WITH REMOTE ON/OFF SWITCH**

- Flow rates of up to 32L/min
- 12V DC voltage power
- Continuous duty
- Remote on/off Switch
- Built-in bypass valve
- Self-priming
- 5m power cable with clamps

FUEL TRANSFER & MANAGEMENT



FUEL TRANSFER-METERING-STORAGE EQUIPMENT ESSENTIALS



**51040
ALEMLUBE 1"
HI-FLO AUTO SHUT OFF
DIESEL NOZZLE**

- High speed, reliable & robust automatic nozzle
- Maximum flow rate of 140L/min
- 1" BSP(f) hot stamped brass swivel
- Maximum working pressure of 40psi (2.8 bar)
- 3-speed lever with removable latch pin
- 3-position stay open latch
- Mesh inlet filter helps to prevent contaminants entering the fuel tank
- Designed to operate with pumping systems only
- Suitable for dispensing diesel fuel & biodiesel up to B5



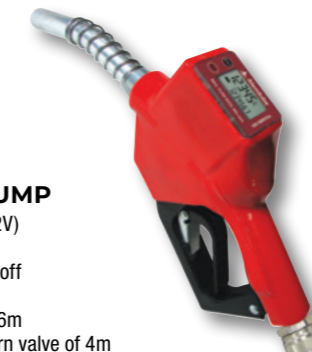
**PIUSI B SMART
FUEL MANAGEMENT SYSTEM**

- Simply open the App on any Android or iOS smart device which immediately connects to the dispenser to start the refuelling operation
- Once refuelling is stopped, a receipt is displayed on the smart device, and in real-time on the manager's Web App
- The App is connected via Bluetooth and works even if no network is available
- Quick and easy to use, saves time and money
- Integrates with Piusi Cube bowlers & Piusi MCBox
- Suitable for diesel dispensing in agriculture, automotive, mining, construction, transport, logistics & industrial sectors
- Mesh inlet filter helps to prevent contaminants entering the fuel tank
- Suitable for dispensing diesel fuel & biodiesel up to B5
- Weight of 1.5kg



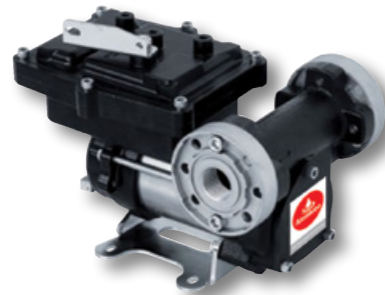
**341040
12V/24V
DIESEL TRANSFER TANK PUMP**

- Flow rates of 70L/min (24V), 35L/min (12V)
- Maximum Amps of 25/16
- Duty cycle of 30 minutes on, 30 minutes off
- 1" BSP(f) inlet & outlet
- Maximum delivery from tank to pump of 6m
- Maximum suction height with a non-return valve of 4m
- Maximum suction height without a non-return valve of 2m
- Supplied inclusive of an on/off switch & pump head filter
- Fitted with an integrated filter & by-pass valve
- Dimensions of 150mm x 155mm x 252mm



**51037M
ALEMLUBE 1"
AUTO SHUT OFF DIESEL NOZZLE
WITH BUILT IN METER**

- Flow rates of up to 60L/min
- Automatically shuts off on back pressure
- Digital meter with 5-digit current dispensed total - resettable
- Digital meter with 7-digit cumulative total - non resettable
- Operating pressure of 50psi (3.5bar)
- Operating temperature range: -10°C to +60°C
- 1" BSP(f) swivel inlet & 19mm (3/4") outlet spout



- 371000**
12V PETROL & AVGAS TANK PUMP
- Compact & sturdy construction with cast iron pump body
 - Flow rates of up to 50L/min
 - 1" BSP(f) inlet/outlet
 - Integrated check valve and pressure relief valve reduces the possibility of motor burn out
 - Duty cycle of 30 minutes on / 60 minutes off
 - Also suitable for the transfer of diesel fuel

372010
12V PETROL DRUM PUMP

- Automatic nozzle with flow rates of up to 50L/min
- Inbuilt nozzle holster
- 4m long antistatic fuel hose
- Fully-flanged components: pump, flow meter & filters easily fitted or replaced
- Suitable for the transfers of ULP, PULP, E10, diesel & kerosene

374010 as above but 240V



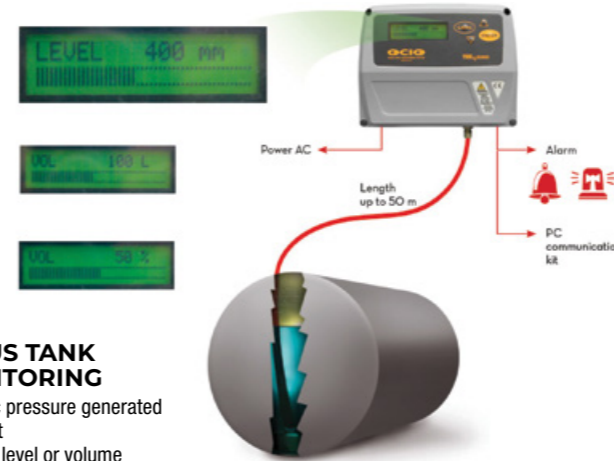
Fuel level
 10mm
 Measured
 resolution

Fuel volume
 20 litres
 Calculated
 resolution

Fuel %
 1%
 Calculated
 resolution

755000-RS
CONTINUOUS TANK LEVEL MONITORING

- Detects the static pressure generated by the fluid height
- Displays the fluid level or volume
- Comes standard with tube and control unit
- The software is used to set tank type and dimensions



390010
HEAVY DUTY HIGH FLOW 240V PETROL & AVGAS TANK PUMP

- True flow rate of 100L/min at end of hose & automatic nozzle
- 1" BSP outlet thread, 1-1/4" BSP inlet thread
- 21035 watt power, 4.5amp maximum
- Continuous duty operation
- IECEx approved for use with petrol, avgas & kerosene

FUEL TRANSFER, METERING, MONITORING & HOSE REELS



FUEL TRANSFER-METERING-STORAGE
EQUIPMENT ESSENTIALS



1 YEAR
 WARRANTY

HR90005
ALEMLUBE EL SERIES 1" FUEL HOSE REEL

- Reinforced steel frame provides maximum strength & stability
- Working pressure of up to 300psi (20bar)
- Includes 30m x 25mm ID rubber hose & hose stop
- 1.5mm thick robust drum with stiffening ribs & flange edges
- Reliable spring life of 20,000 cycles & positive ratchet lock design
- Also suitable for air & water



1 YEAR
 WARRANTY

HR90010
ALEMLUBE EL SERIES 1" FUEL HOSE REEL

- Working pressure of up to 300psi (20bar)
- Includes 15m x 25mm ID rubber hose & hose stop
- 1.5mm thick robust drum with stiffening ribs & flange edges
- Reliable spring life of 20,000 cycles & positive ratchet lock design
- Can be mounted on the floor, wall or ceiling
- Durable long lasting powder coated finish
- Also suitable for air & water



1 YEAR
 WARRANTY

HR90080C
ALEMLUBE EL SERIES 3/4" FUEL HOSE REEL WITH AUTO SHUT OFF NOZZLE

- Working pressure of 145psi (10bar)
- Includes 10m x 19mm ID NBR rubber hose, hose stop & auto shut-off nozzle
- 1.5mm thick robust drum assembly with stiffening ribs & flange edges
- Latching solution enables the hose to be stopped in multiple positions



1125-6-35C
ALEMLUBE 1" DIESEL & FUEL HAND CRANK HOSE REEL DISPENSING KIT

- Supplied with 10m x 25mm ID hose
- Automatic shut off nozzle
- Heavy duty steel construction
- Pressure rating of 300psi (207bar)
- Nickel plated steel full-flow swivel
- Solid steel direct hand crank



407010N2

1" ELECTRONIC DIESEL FUEL METER

- Turbine type meter with aluminium body & polypropylene turbine
- Bi-directional flow as required
- Accurate between flow rates of 7L/min & 120L/min
- Maximum operating pressure of 290psi (20 bar)
- 1" BSP inlet & outlet ports

51008

1" MECHANICAL DIESEL FUEL METER

- Flow rates of 20L/min & up to 120L/min
- Mechanical gear meter accurate to $\pm 1.0\%$
- Max: working pressure of up to 142psi (10bar)
- Also suitable for use with kerosene
- 1" BSP(f) inlet/outlet ports

51007 as above but 4 digit display

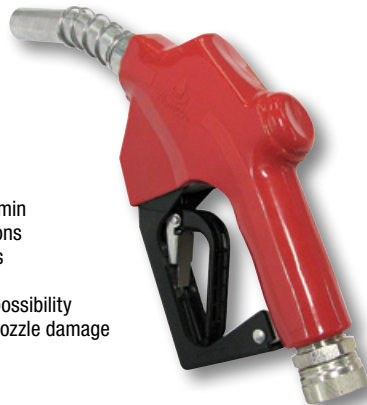
FUEL TRANSFER-METERING-STORAGE EQUIPMENT ESSENTIALS



52007

1" MANUAL DIESEL FUEL NOZZLE

- Capable of flow rates up to 150L/min
- Suitable for gravity feed applications & applications including pressures of up to 140psi (10bar)
- Hanging clip helps to reduce the possibility of diesel fuel contamination and nozzle damage
- 1" BSP(f) swivel included
- Ideal for farm tank applications



51039

ALEMLUBE 1" AUTO SHUT OFF DIESEL NOZZLE

- Delivery rates of up to 120L/min
- Maximum working pressure of 80psi (5.5 bar) (Not suitable for gravity feed applications)
- Body: aluminium. Seals: buna-n & viton. Outlet spout: stainless steel with viton cased oil seal
- Suitable for applications involving an electric diesel transfer pump only



* Applies to the majority of Alemlube products unless otherwise stated.
FTMS0123

Call Alemlube on:

NSW/ACT: (02) 9677 1555 • VIC/TAS: (03) 8787 8288 • QLD/PNG: (07) 3204 9166
WA(08) 9302 4199 • SA/NT: (08) 8241 7111 • NZ 64 9 447 1007

www.alemlube.com.au
info@alemlube.com.au
www.alemlube.co.nz
info@alemlube.co.nz