

**3M** Science.  
Applied to Life.™

# Protect workers at the loading and unloading bay

Understand the working-at-height hazards and discover solutions to help prevent injuries during loading and unloading.





For **50<sup>+</sup>** years,  
the safety behind  
your success

3M helps protect workers in a changing world. Across diverse industries and applications, our technology, knowledge and energy drive innovative solutions. Our goal is to help protect you from hazards in the work environment, so you can focus on the job at hand.

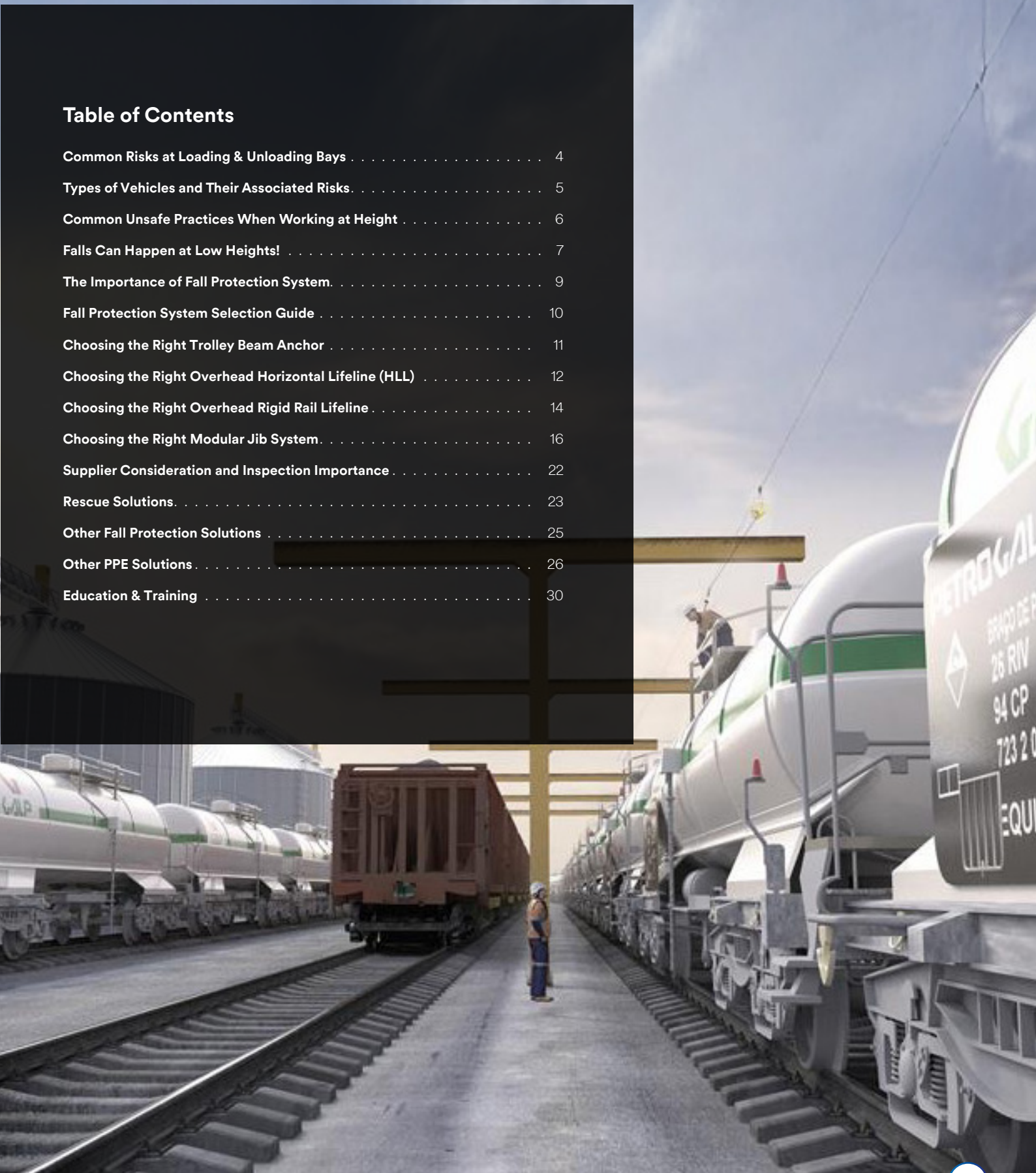
Over 50 years ago, 3M introduced the first U.S. Government-approved 3M filtering facepiece respirator, and the 3M™ E-A-R™ Classic Ear Plug.

Today, 3M remains dedicated to developing Personal Protective Equipment (PPE) to help get your workers back home: we apply science to life, helping protect workers' health and safety on the job, for employees today and tomorrow. Learn more about the history of our advancements and where we are going next.

**[3M.com/safety50](https://www.3m.com/safety50)**

## Table of Contents

Common Risks at Loading & Unloading Bays . . . . .	4
Types of Vehicles and Their Associated Risks . . . . .	5
Common Unsafe Practices When Working at Height . . . . .	6
Falls Can Happen at Low Heights! . . . . .	7
The Importance of Fall Protection System . . . . .	9
Fall Protection System Selection Guide . . . . .	10
Choosing the Right Trolley Beam Anchor . . . . .	11
Choosing the Right Overhead Horizontal Lifeline (HLL) . . . . .	12
Choosing the Right Overhead Rigid Rail Lifeline . . . . .	14
Choosing the Right Modular Jib System . . . . .	16
Supplier Consideration and Inspection Importance . . . . .	22
Rescue Solutions . . . . .	23
Other Fall Protection Solutions . . . . .	25
Other PPE Solutions . . . . .	26
Education & Training . . . . .	30



# Common Hazards at Loading and Unloading Bay

Here are some common risks workers may encounter during loading and unloading. Have you or your team experienced similar situations?

## The six common hazards during loading and unloading:



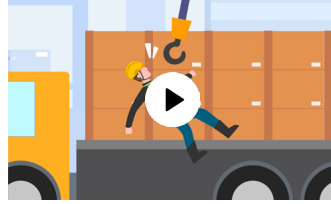
# Types of Vehicles and Their Associated Risks

---



## Flatbed Truck

Workers help guide forklifts or cranes to position loads on a flatbed and handle tarps when covering or uncovering the load.



Fall caused by being struck by a moving crane



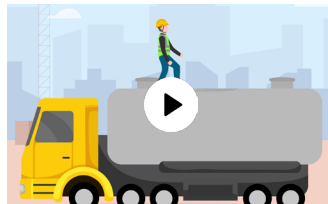
Fall caused by slippery surface

---



## Tanker

Workers install or remove hoses or inspect the tanker contents from the top during loading or unloading.



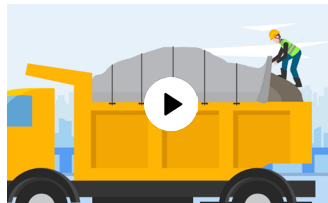
Fall caused by uneven, curved, or slippery surface

---



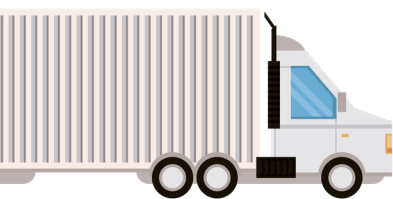
## Tipper Truck

Workers place or remove a tarp on top of loads, often over loose material.



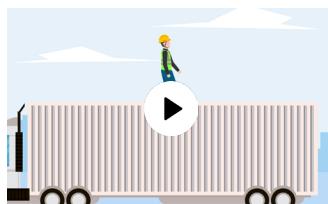
Fall caused by loose and uneven foothold material

---

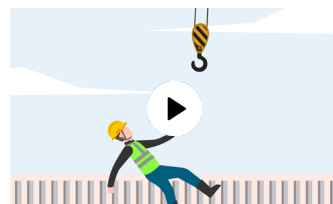


## Container Truck

Workers install or remove crane hooks on top of the container.



Fall caused by uneven, or slippery container surface



Fall caused by being struck by a crane hook

# Common Unsafe Practices When Working at Height

## 3 Unsafe Practices

Across industrial sites, certain unsafe practices frequently occur during loading and unloading activities. These behaviours increase exposure to falls, collisions, and other preventable incidents if proper safety measures are not followed.

### Walking on Flatbeds Without Fall Protection

A common unsafe practice where workers walk on loaded flatbeds without any fall protection.



### Sitting on Flatbed Siderails

Workers seated on flatbed siderails risk falling backward if the siderails fail or if they lose balance, as the edges provide no stable support.



### Walking on Platforms Without Protection

Worker walking from a platform to a tanker top without fall protection faces a high risk of serious injury from unstable footing and exposed edges.

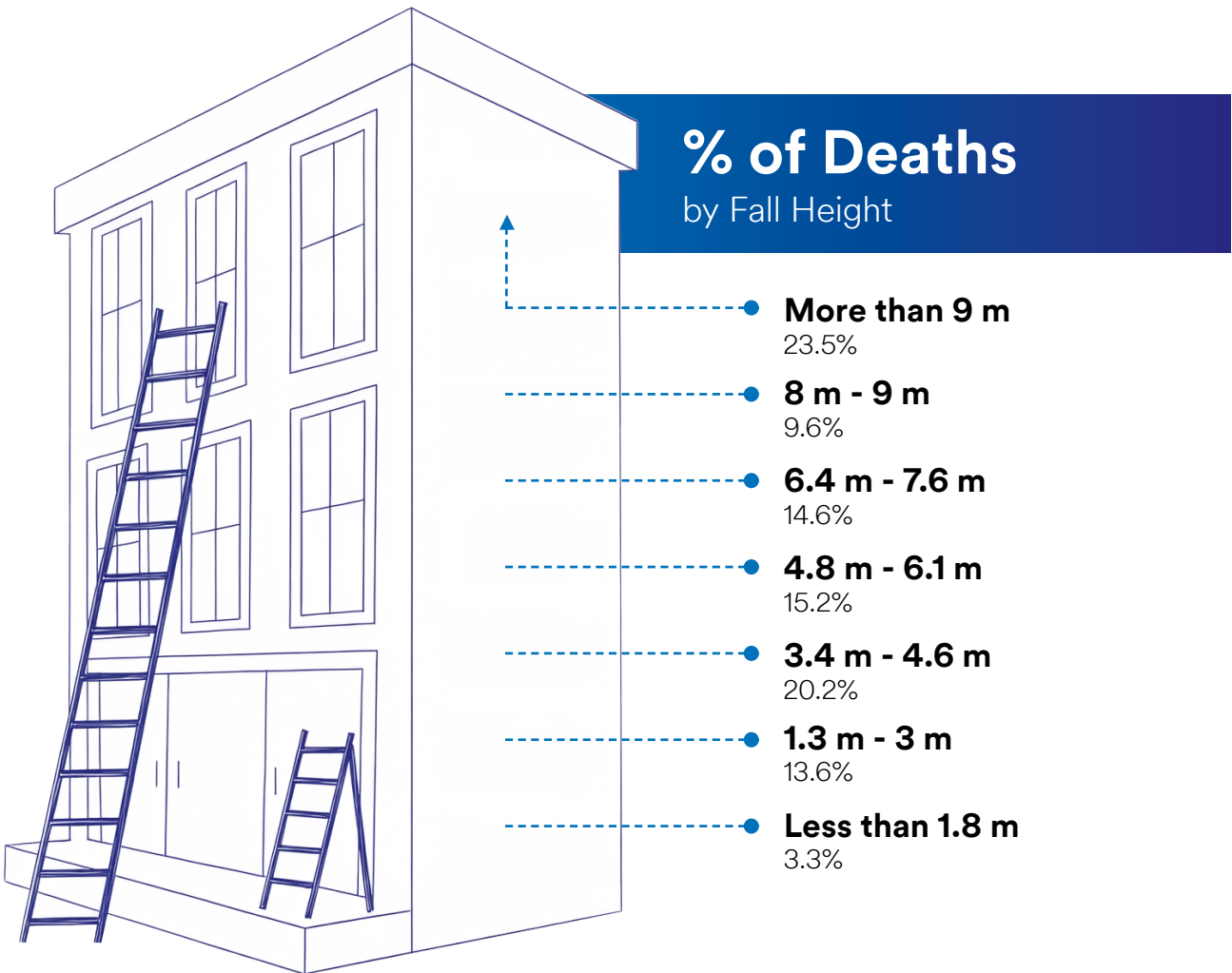
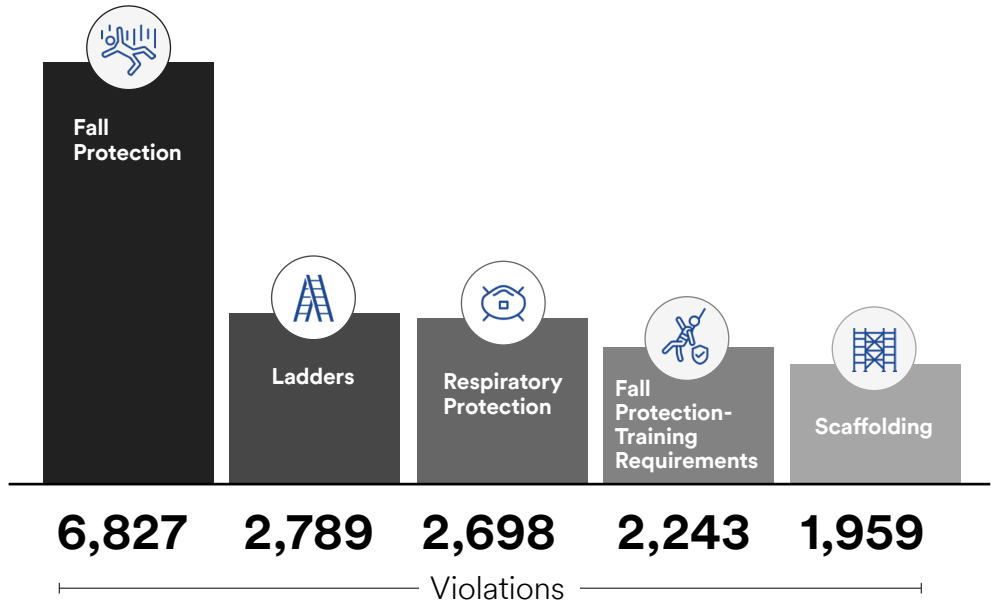


# Falls Can Happen at Low Heights!

Falls can occur at any height. Even during everyday tasks like loading or unloading, working close to the ground can still be risky. A slip, trip, or brief loss of balance can cause a fall and lead to injury. Because the height seems low, these risks are often overlooked.

## OSHA'S Top 10 Serious Violations as of 2025

Data source: OSHA Information System (Oct. 1, 2023 – Sept. 30, 2024); current as of August 2025.



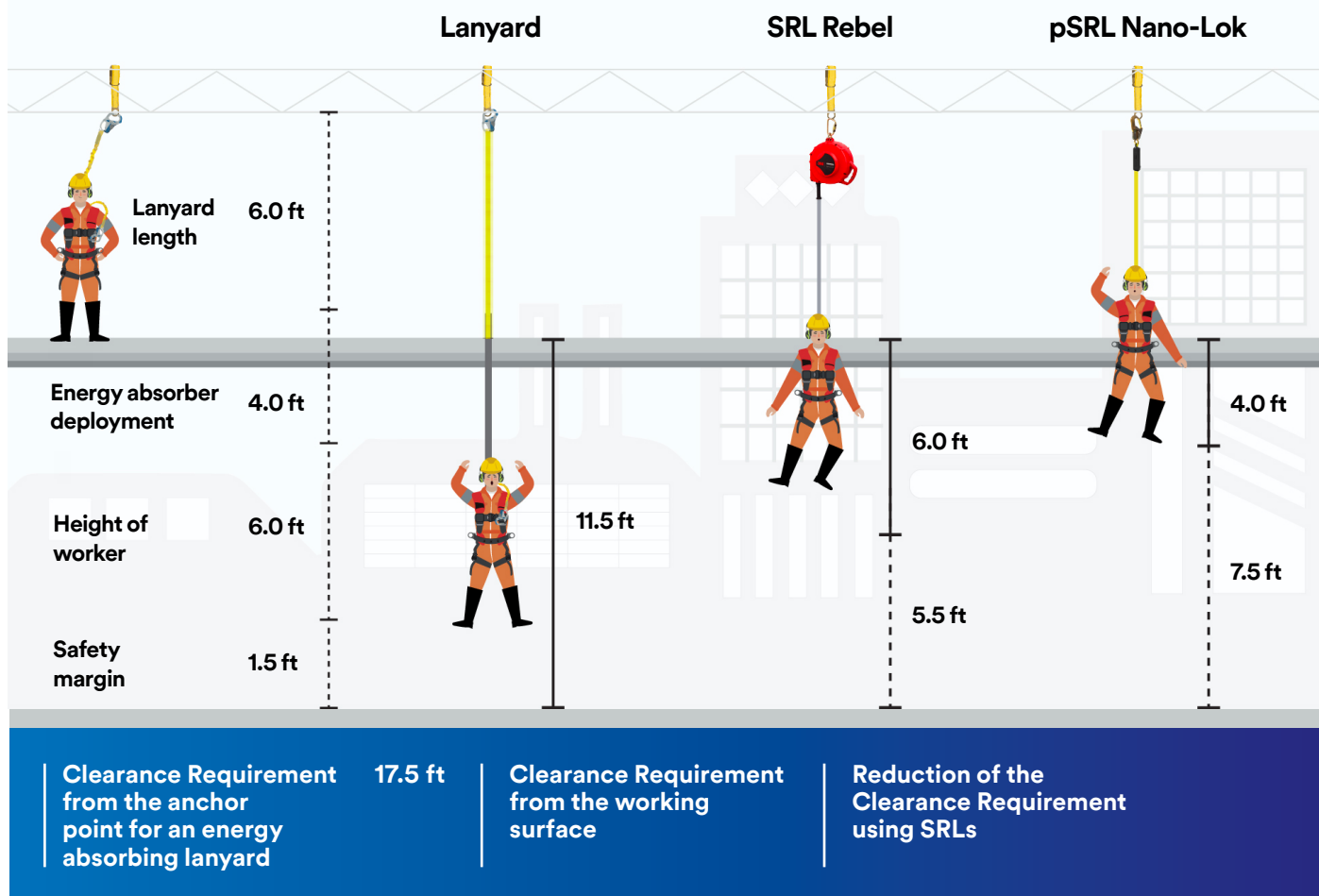
# Falls Can Happen at Low Heights!

**77%**

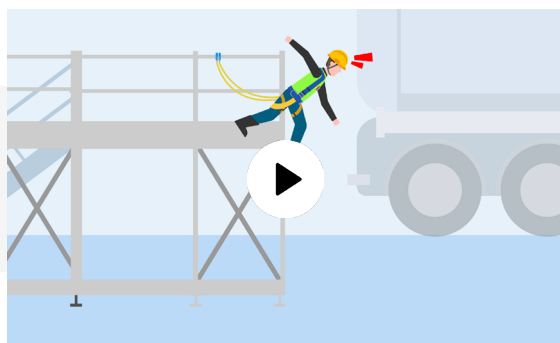
of fatalities from falls occur at “low heights” — where a lanyard may not be an effective solution\*

## Is a Body Harness and Lanyard Enough?

In loading bays with platforms, a lanyard may not provide the required fall clearance when a fall occurs. Victim may land on the ground without the lanyard deploying.



\*Source: BLS IIF, construction fall fatalities (2011–2015), accessed April 2022.



Click or scan QR code to watch how fall can happen if fall clearance is insufficient.

# Why is a Fall Protection System Important?

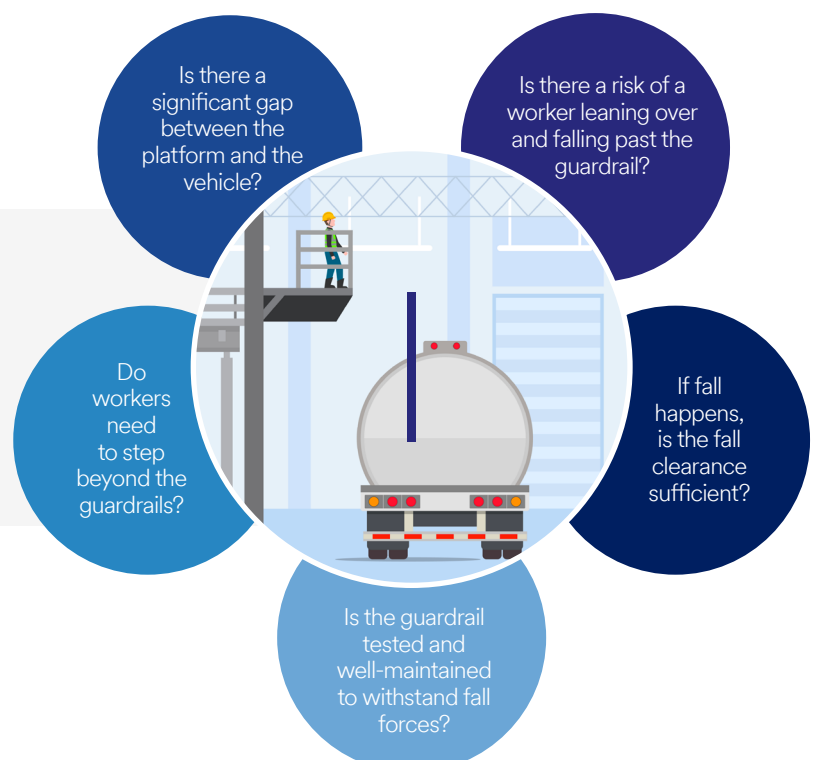
At loading and unloading bays, guardrails are often seen as the safer option because they provide constant protection and help prevent workers from falling outward without requiring special equipment. However, guardrails alone have limitations, and relying on them may not fully protect workers. For complete safety, they should be used together with a proper fall protection system.



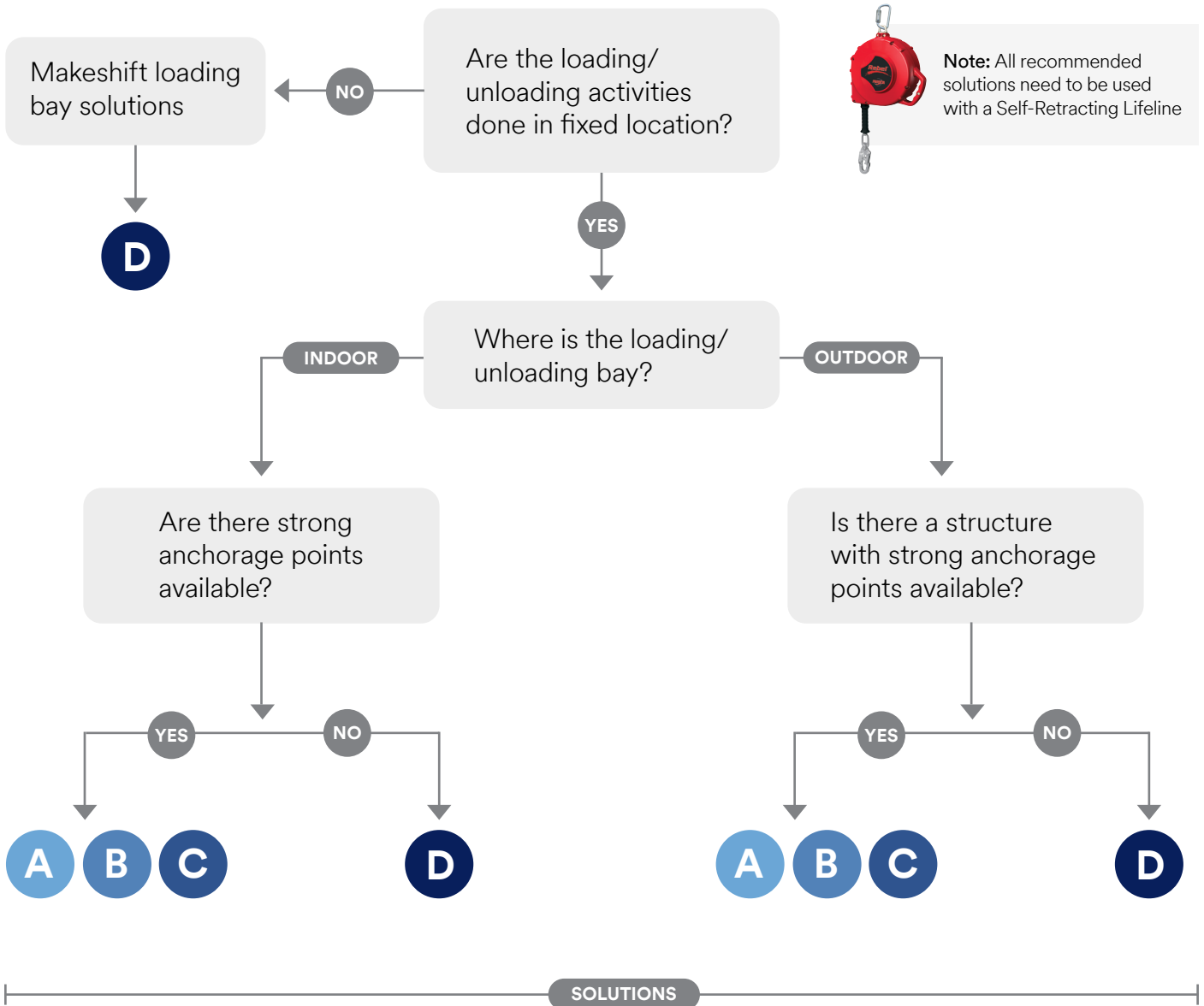
Fall Protection System <small>(Lifelines, Beam Anchors, Modular Jib, SRLs)</small>	+	Guardrail
Protects worker during movement	<b>Protection coverage</b>	Protects fixed areas only
Adapts to variable heights	<b>Adaptability of vehicle height</b>	Fixed height - limited
No structural gates/openings required	<b>Access requirement</b>	Often requires gates/openings
Continuous protection	<b>Risk during loading activity</b>	Exposure when stepping beyond rail
High	<b>Suitability for multiple scenarios</b>	Limited

## Ask yourselves these questions.

If your answer is NO to any of these questions, then guardrails are not enough.



# Fall Protection System Selection Guide



## SOLUTIONS

**A**

**Overhead Horizontal Lifeline (HLL)**

**B**

**Beam Trolley Anchor**

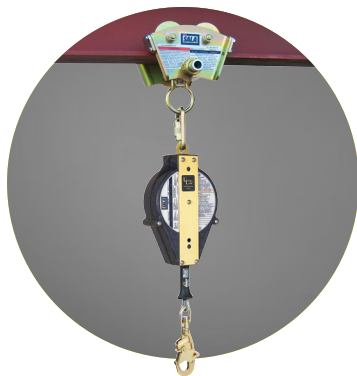
**C**

**Overhead Rigid Rail Lifeline**

**D**

**Modular Jib System**

# Choosing the Right Beam Trolley Anchor for Fall Protection



In loading and unloading bays, fall protection must support fast paced, repetitive work. The right trolley beam anchor should meet tested safety standards, perform reliably in demanding environments, support required weight capacities, and allow smooth freedom of movement along the beam. Our recommended trolley beam anchor is designed to handle real work conditions, keeping workers protected without slowing down operations.

## 3M™ DBI-SALA® Beam Trolley

The trolley is for use with self-retracting lifelines on horizontal beams and has been engineered to glide along the beam and provide horizontal mobility.



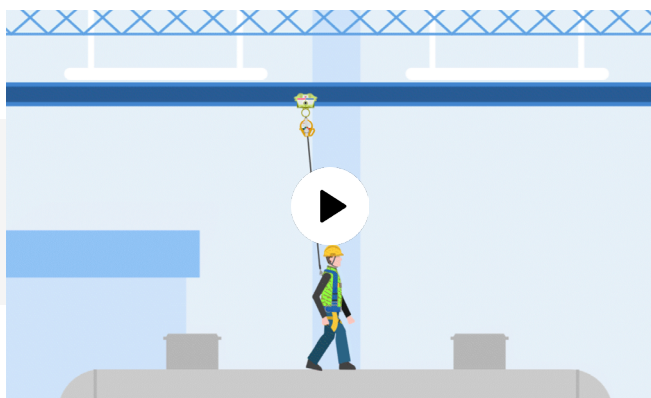
Made from stainless steel and zinc-plated steel, providing long-lasting rust protection.



Fixed rotating D-ring mounts in the center for better weight distribution.



Compatible with a range of fall protection systems and other personal protective (PPE).



Click here or scan QR code to watch the video.

Part No.	Material	I-Beam Dimension	Weight Capacity
2103143	Zinc Plated Steel	76 - 203 mm width up 17 mm thick flange	141 kg, 1 user
2103147	Stainless Steel		

- Complies to EN795:2012 Type B, ANSI Z359.18 Type A & OSHA 1910.140, OSHA 1926.502.
- Double-shielded wheel bearings.
- Trolley guards protect the wheels from damage and keep beam clear of debris.
- Fixed rotating D-ring mounts in the center for better weight distribution.
- 1 year warranty from the date of installation.

# Choosing the Right Overhead Horizontal Lifeline (HLL) for Fall Protection

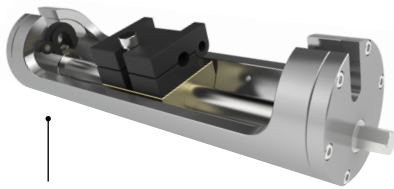


Workers in loading and unloading bays need safety gear that keeps up with the pace. The right horizontal lifeline provides reliable fall arrest or work restraint and allows uninterrupted movement along a straight line or around corners when connected to a suitable structure.

## 3M™ DBI-SALA® 8mm Overhead Permanent Horizontal Lifeline System

### Installers and architects

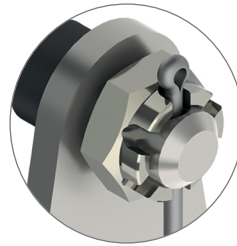
- ▶ Includes free cloud-based software to help calculate and design systems
- ▶ Systems can be used across a variety of industries, applications, orientations and geographies—making specification, sales and training easier for installers
- ▶ Easier installation with a removable tensioning tool



**7241431**  
Tensioning tool

### Safety managers

- ▶ Complies to EN 795 C & D, TS16415 2013, OSHA or AS/NZS 1891.2:2001
- ▶ 316 Stainless steel components help provide long-term corrosion resistance\*
- ▶ 10 years corrosion warranty
- ▶ Allows up to 200 ft. single span for one user and up to 100 ft. single span for multiple users\*\*
- ▶ Supports self-retracting lifelines and controlled rate descent devices



Stainless steel components

### End users

- ▶ High-capacity and uniform energy absorption designed to balance peak force, capacity and deflection.
- ▶ Robust travelers offer continuous system travel, including bypass of intermediate and corner brackets
- ▶ Incorporated large D-ring for easy connection

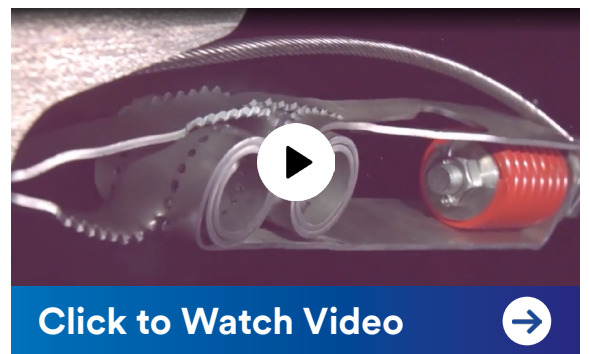


**7241421**  
Overhead traveler

\*Some aggressive environments can cause corrosion and discoloration of stainless steel

\*\*The number of system users and span lengths must be verified by the calculation software

**Smarter software.  
Stronger hardware.  
Easier installation.**



### How Does a Lifeline Energy Absorber Work?

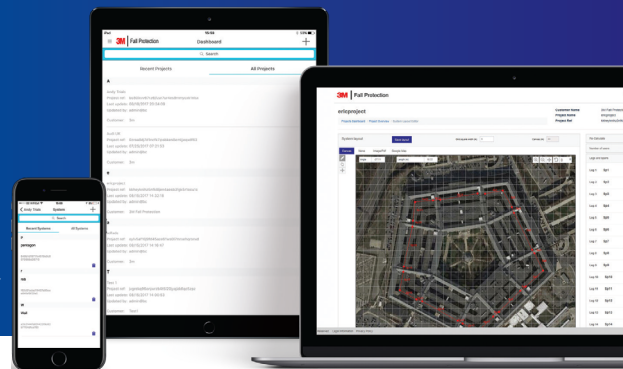
- Patented energy absorber technology provides predictable linear, high-capacity performance.
- Integrated tensioner allows for thermal expansion and contraction of reducing cable slack.

# Overhead Horizontal Lifeline (HLL)

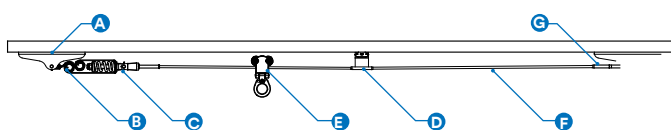
## 3M™ DBI-SALA® 8 mm Permanent HLL Systems include calculation software.

Build and specify solutions with cloud-based software as robust as the systems it supports. It lets you accurately calculate fall distances and produces a full technical report for your clients. Access project data from your desktop, laptop, tablet or phone anywhere, anytime. Now you can calculate, build and document your systems so ordering and installation is easier than before.

\*The number of system users and span lengths must be verified by the calculation software.



## Installation Examples - Overhead



## Straight overhead system

<b>A</b> Multi-fix anchor plate	7241417
<b>B</b> 4270 lbf peak force, 24 kN system tension energy absorber	7241427
<b>C</b> Hex swage stud, pass through	7241430
<b>D</b> 8 mm overhead bracket	7241414
<b>E</b> Overhead traveler	7241421
<b>F</b> 8 mm 1 × 19 stainless steel cable	7240212
<b>G</b> Hex swage toggle	7234011

## System Components\*

		Description	Part No.	Overhead Applications
Travelers		8 mm overhead traveler	7241421	✓
Intermediate Brackets		8 mm intermediate bracket	7241412	✓
		8 mm overhead bracket	7241414	✓
Energy Absorbers		19 kN peak force, 24 kN system tension energy absorber	7241427	✓
Corners		90-degree internal corner	7241406	✓
		45-degree internal corner	7241409	✓
End Anchors		8 mm straight eye	7240122	✓
		Multi-fix anchor plate	7241417	✓
Terminations		8 mm hex swage stud, pass through	7241430	✓
		8 mm hex swage toggle	7234011	✓
Joiner		8 mm hex swage joiner	7234012	✓
Cables**		8 mm 7 × 7 stainless steel cable	Available in defined lengths	✓
		8 mm 1 × 19 stainless steel cable		✓

\*All system components are stainless steel

\*\*7 × 7 cable is more commonly used in low-tension applications; 1 × 19 cable is more commonly used in high-tension applications (e.g. overhead)

# Choosing the Right Overhead Rigid Rail Lifeline

Choosing the right overhead rigid rail lifeline is essential for protecting workers in loading and unloading bays where fall risks are constant. With changing vehicle heights and limited clearance, a properly designed system reduces fall distance, minimises hazards, and ensures smooth, continuous protection.

## 3M™ DBI-SALA® Unirail™ Horizontal Lifeline System

The Horizontal Rail Safety System is an extruded aluminium rail system, which provides a robust and solid anchorage for attachment by multiple workers and does not flex under normal working loads.

- Tested in accordance with EN 795:2012 D and TS 16415:2013, and compliant with OSHA 1926.502 and AS/NZS 1891.2:2001 standards.
- Weight capacity per user 141kg.
- Anodised 6000 series aluminum alloy and 316 stainless steel components help system withstand harsh environments, providing longevity and saving future maintenance and replacement costs.
- Capable of navigating corners and contours in the building or structure to provide complete design flexibility.
- Can span up to 4m between joiners and 3.6m maximum between brackets.
- The main rail floats in its fixings to mitigate the effects of thermal expansion and contraction which could otherwise cause the rail to buckle.
- No tensioning or energy absorber is required.
- Tamper-Proof Carriage Stop is available to prevent the carriage from coming off the end of the system.
- 10 years corrosion warranty.



7241006 - Attachment Carriage



Click here or scan QR code to watch the video.

# Choosing the Right Overhead Rigid Rail Lifeline



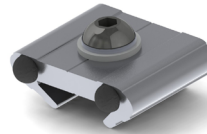
## Moulded End - 7241053

Protects personnel from injuring themselves against an exposed edge of end rail.



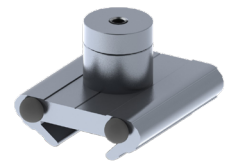
## System Stop - 7241001

Prevents the rail from coming out of its end anchorage bracket in the event of a fall in the first or last span of the system.



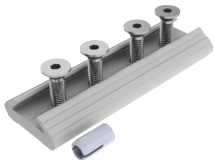
## Tamper-Proof Carriage Stop - 7241000

Prevents the carriage from coming off the end of the system.



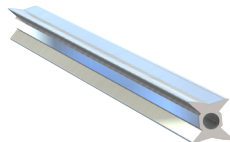
## Removable Carriage Stop - 7241002

Prevents the carriage from coming off the end of the system but can be removed to allow the carriages to be taken off.



## Rail Joint - 7241005

Joins the ends of two rails and maintains the integrity of the system for fall arrest situations.



## Rail - 7241013

Discrete profile just 32 mm x 32 mm (1 1/4" x 1 1/4"). Silver anodised as standard.



## Corners

90° - 7241014

90° external - 7241015

90° internal - 7241016

45° - 7241019

45° external - 7241018

45° internal - 7241017

Corners are available from stock and other bends and forms are easily accommodated down to a radius of 200mm (7.88").

## Side Fix Parts



## End Anchor - 7241009

Secures the end of the rail to the structure and controls rail movement in the event of a fall.



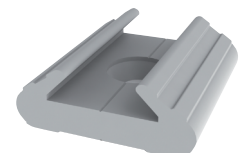
## Intermediate Anchor - 7241012

Secures the rail to the structure at intervals to suit the work site and structure.



## End Anchor - 7241008

Secures the end of the rail to the structure and controls rail movement in the event of a fall.



## Intermediate Anchor - 7241011 - 7241010 Tapped Version

Secures the rail to the structure at intervals to suit the work site and structure.

# Choosing the Right Modular Jib System

Choosing the right overhead rigid rail lifeline is essential for protecting workers in loading and unloading bays where fall risks are constant. With changing vehicle heights and limited clearance, a properly designed system reduces fall distance, minimizes hazards, and ensures smooth, continuous protection.

## 3M™ DBI-SALA® Flexiguard™ Modular Jib System

3M™ DBI-SALA® Flexiguard™ Solutions are designed to help provide safe working areas with overhead anchor points for one or more workers in a variety of challenging situations. These systems are versatile and often mobile.

## How does the system works in loading bays?



Outrigger Base

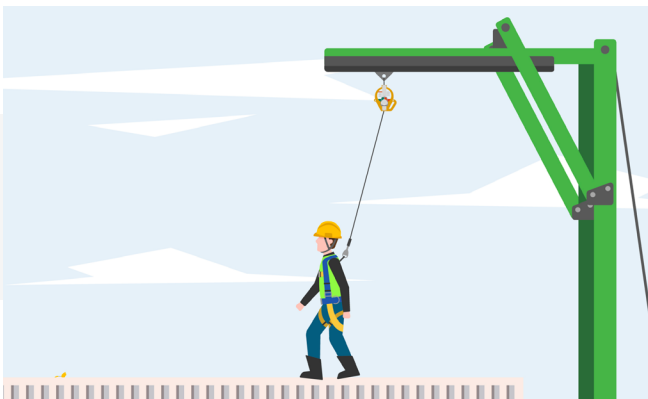


Counterweighted Base



Trailer Mount System

Refer to subsequent pages for more configuration available.

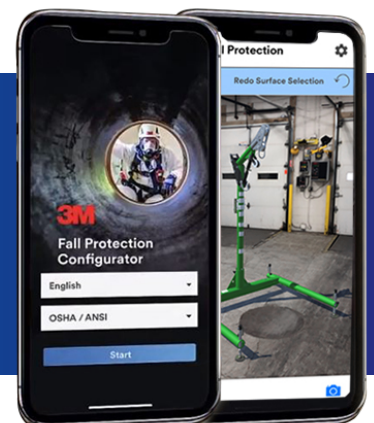


Click here or scan QR code to watch the video.

## Augment your expectations.

The 3M Fall Protection Configurator App is here—view select 3M™ DBI-SALA® Flexiguard™ Solutions in your work environment, right from your phone.

Contact 3M for more information or to schedule a site assessment.

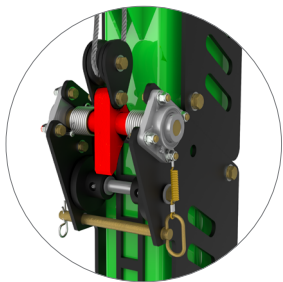


# Modular Jib Systems M100 and M200

- ▶ Extruded aluminum overhead horizontal rail for SRL trolley
- ▶ Stainless steel anchor trolley
- ▶ Dual by-passing rails (two user models)

## Rescue Ready

- ▶ Equip the optional rescue mounting kit for a turnkey rescue plan or confined space retrieval device
- ▶ Rescue kits available for M100 and M200 models



## Patent Pending Fail-Safe Mast Lock

- ▶ Eliminates need for height-locking fasteners like pins and bolts
- ▶ Automatic safety lock engages to prevent uncontrolled mast movement if primary lifting mechanism fails



- ▶ Flip up rotation handle
- ▶ Improve productivity with the optional power assisted device. When equipped, it adjusts height four times faster than the manual adjustment of previous 3M models

- ▶ Rotating mast up to 360 degrees (most models)
- ▶ 3M™ Safety-Walk Slip Resistant walking surface (counterweight bases)

## Powder Coated and Galvanised Components

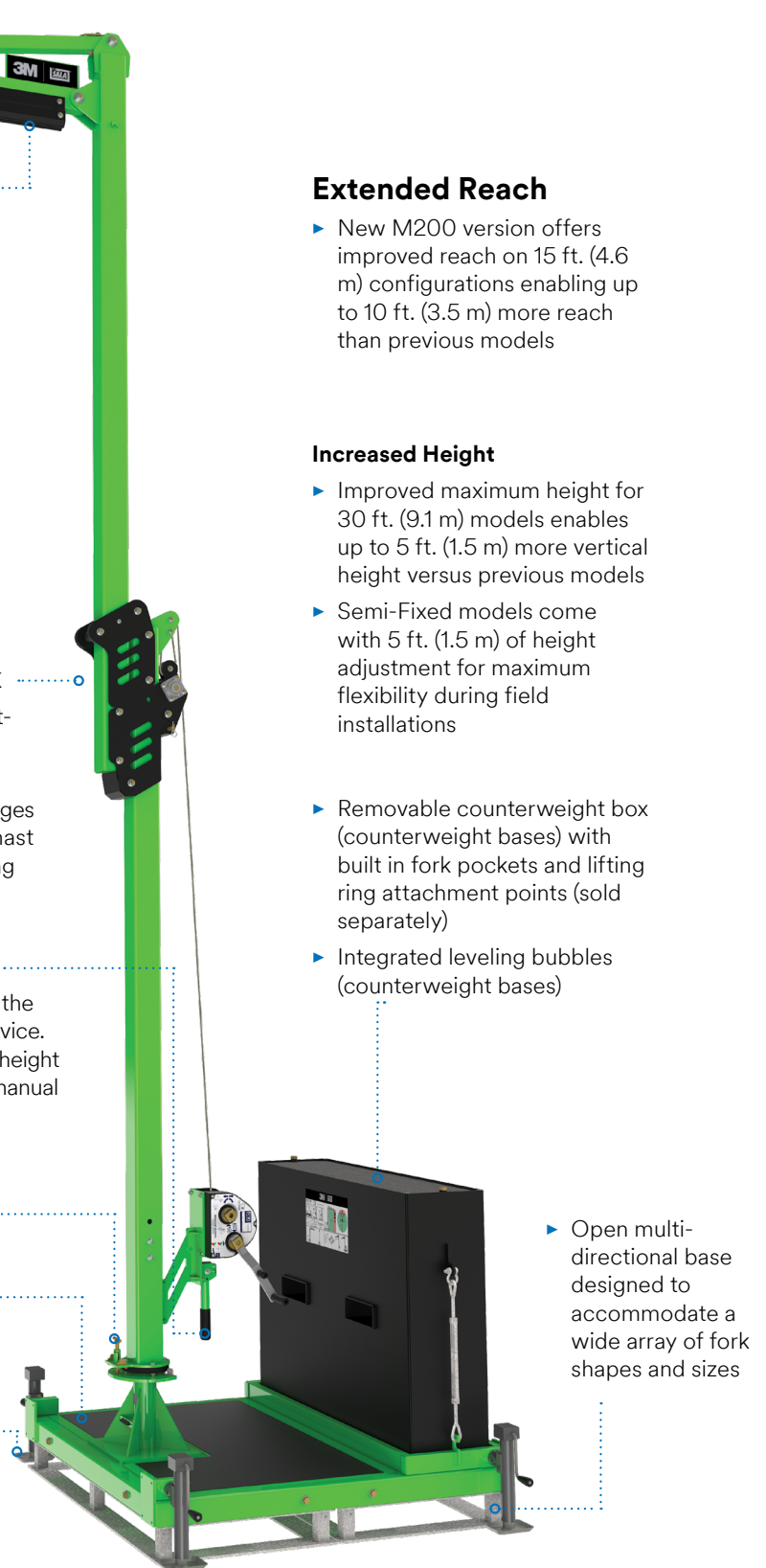
## Extended Reach

- ▶ New M200 version offers improved reach on 15 ft. (4.6 m) configurations enabling up to 10 ft. (3.5 m) more reach than previous models

## Increased Height

- ▶ Improved maximum height for 30 ft. (9.1 m) models enables up to 5 ft. (1.5 m) more vertical height versus previous models
- ▶ Semi-Fixed models come with 5 ft. (1.5 m) of height adjustment for maximum flexibility during field installations
- ▶ Removable counterweight box (counterweight bases) with built in fork pockets and lifting ring attachment points (sold separately)
- ▶ Integrated leveling bubbles (counterweight bases)

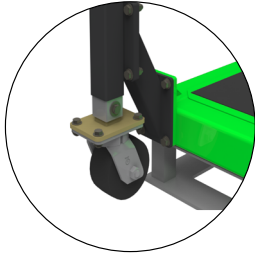
- ▶ Open multi-directional base designed to accommodate a wide array of fork shapes and sizes



# Modular Jib Systems M100 and M200

## Easier Transport

Patent-pending weight distribution simplifies transport using 2,268 kg-rated (5,000 lb.) forklift for all counterweight models



### M100 System Weights:

- ▶ Complete System 2,266 kg (4,995 lbs.)
- ▶ System Without Counterweight 861 kg (1,900 lbs.)
- ▶ Counterweight Box Alone 1,404 kg (3,095 lbs.)

## M100 Systems

- ▶ Can be transported in one piece with a 2,268 kg (5,000 lb.) forklift
- ▶ Navigate indoor smooth surface spaces with optional caster wheel kit

## M200 Systems

- ▶ Can be transported in one piece with a large lift

OR

- ▶ Separated into individual components and transported with a 2,268 kg (5,000 lb.) forklift



### M200 System weights:

- ▶ Complete System 5,746 kg (12,668 lbs.)
- ▶ System Without Counterweight 1,210 kg (2,668 lbs.)
- ▶ Counterweight Box Alone 2,268 kg (5,000 lbs.) each

Counterweight box alone = 2,268 kg (5,000 lbs.) (two boxes total)



System weight with counterweights removed = 1,210 kg (2,668 lbs.)

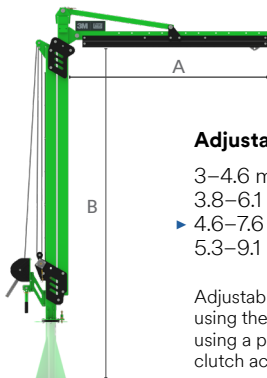


**Important:** Counterweights must be installed prior to use. They shall only be removed for transport.

# Modular Jib Systems M100

Model	Total System Weight	Max. Component Weight	Offset/Reach (A)	Height (B)	Mast Rotation Range	Max. Number of Users	SRL Maximum Arresting Force
M100	2,266 kg (4,995 lbs.)	1,404 kg (3,095 lbs.)	2.3 m (7.5 ft.)	Up to 9.1 m (30 ft.)	270° with counterweight base 360° with others	1	6 kN (1,350 lbs.)

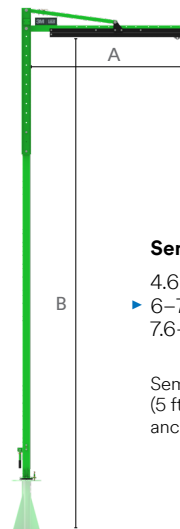
## 1. Choose from 7 interchangeable mast options



### Adjustable Height, Single User Masts

- 3–4.6 m (10–15 ft.) **8530874**
- 3.8–6.1 m (12.5–20 ft.) **8530875**
- ▶ 4.6–7.6 m (15–25 ft.) **8530876**
- 5.3–9.1 m (17.5–30 ft.) **8530877**

Adjustable height masts are adjusted easily using the integrated hand crank winch, or by using a power drill with the optional overload clutch accessory equipped.



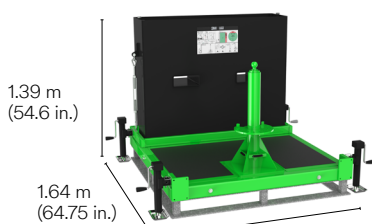
### Semi-Fixed Height, Single User Masts

- 4.6–6 m (15–20 ft.) **8530882**
- ▶ 6–7.6 m (20–25 ft.) **8530883**
- 7.6–9.1 m (25–30 ft.) **8530884**

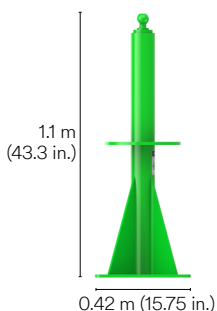
Semi-fixed masts offer a small amount (5 ft. or 1.5 m) of adjustment to optimise the anchor height during installation.

▶ = Model shown

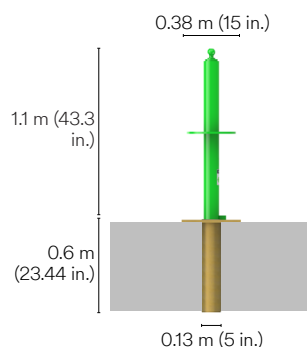
## 2. Choose from 5 interchangeable base options



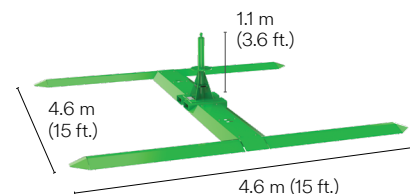
2.01 m (79.25 in.)  
With leveling jacks installed  
1.52 m (60 in.)  
Without leveling jacks installed



Floor Mounted Base  
**8530871**



Flush Mounted Base  
**8530872**



Outrigger Base  
**8530873**

Portable Counterweight Base\*  
With concrete fill **8530870**  
Without concrete **8530869**

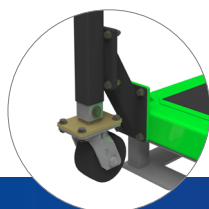
\*Portable Counterweight Base includes leveling jacks

## 3. Choose your accessories



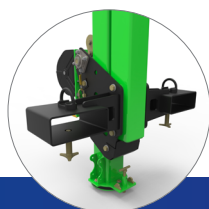
**Confined Space & Rescue Pulley Kit**  
**8530885**

Enables a rescue device to be mounted to the system. Includes mounting brackets and re-direct pulleys. Rescue devices sold separately.



**Smooth Surface Caster Kit**  
**8530908**

Allows counterweight base systems to be maneuvered into tight spaces on smooth surfaces.



**Forklift Pocket Mast Transport Kit**  
**8530911**

Allows mast to be separated from the base and transported vertically using a forklift.



**Overload Clutch**  
**8512936**

Required to raise and lower adjustable masts with a power drill. (Drill not included)



**Counterweight Box Lifting Ring Kit**  
**8530914**

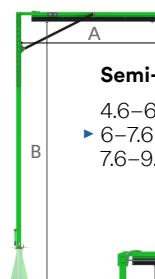
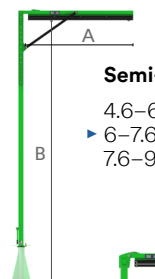
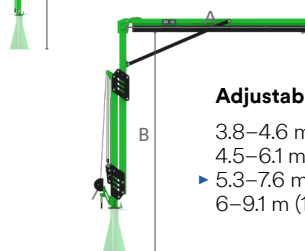
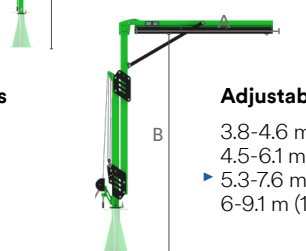
Allows counterweight box to be moved with overhead lifting equipment. Includes two rings per kit. One kit needed per counterweight system.

# Modular Jib Systems M200

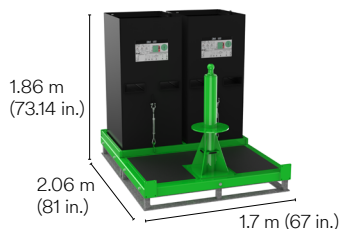
Model	Total System Weight	Max. Component Weight	Offset/Reach (A)	Height (B)	Mast Rotation Range	Max. Number of Users	SRL Maximum Arresting Force
M200	5,746 kg (12,668 lbs.)	2,268 kg (5,000 lbs.)	4.6 m (15 ft.) Single User Models 3.7 m (12 ft.) Dual User Models	Up to 9.1 m (30 ft.)	360° for all bases.	1 or 2 depending on model.	6 kN (1,350 lbs.)

## 1. Choose from 14 interchangeable mast options

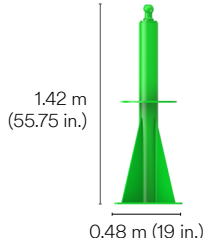
► = Model shown

 <p><b>Semi-Fixed Height, Single User Masts</b></p> <p>4.6–6 m (15–20 ft.) <b>8530899</b>          ► 6–7.6 m (20–25 ft.) <b>8530900</b>          7.6–9.1 m (25–30 ft.) <b>8530901</b></p>	 <p><b>Semi-Fixed Height, Dual User Masts</b></p> <p>4.6–6 m (15–20 ft.) <b>8530902</b>          ► 6–7.6 m (20–25 ft.) <b>8530903</b>          7.6–9.1 m (25–30 ft.) <b>8530904</b></p> <p>Semi-fixed masts have a small amount (5 ft. or 1.5 m) of adjustment to optimise the anchor height during installation.</p>
 <p><b>Adjustable Height, Single User Masts</b></p> <p>3.8–4.6 m (12.3–15 ft.) <b>8530891</b>          4.5–6.1 m (14.8–20 ft.) <b>8530892</b>          ► 5.3–7.6 m (17.3–25 ft.) <b>8530893</b>          6–9.1 m (19.8–30 ft.) <b>8530894</b></p>	 <p><b>Adjustable Height, Dual User Masts</b></p> <p>3.8–4.6 m (12.3–15 ft.) <b>8530895</b>          4.5–6.1 m (14.8–20 ft.) <b>8530896</b>          ► 5.3–7.6 m (17.3–25 ft.) <b>8530897</b>          6–9.1 m (19.8–30 ft.) <b>8530898</b></p> <p>Adjustable height masts are adjusted easily using the integrated hand crank winch, or by using a power drill with the optional overload clutch accessory equipped.</p>

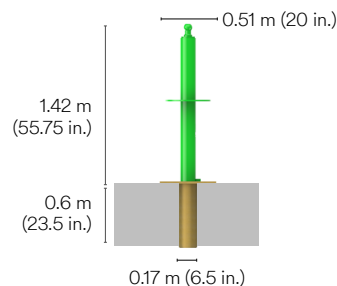
## 2. Choose from 4 interchangeable base options



Portable Counterweight Base\*  
 With concrete fill **8530887**  
 Without concrete **8530886**



Permanent Floor Mounted Base  
**8530888**



Permanent Flush Mounted Base  
**8530889**

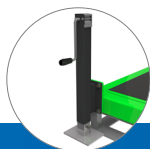
\*Portable Counterweight Base optional leveling jacks sold separately

## 3. Choose your accessories



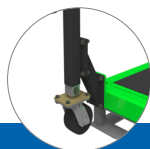
**Confined Space and Rescue Pulley Kit**  
**8530905**

Enables a rescue device to be mounted to the system. Includes mounting brackets and re-direct pulleys. Rescue devices sold separately.



**Jack Stabilising Kit**  
**8530907**

Designed to stabilise and level counterweight base systems on slightly uneven surfaces.



**Smooth Surface Caster Kit**  
**8530908**

Allows counterweight base systems to be maneuvered into tight spaces on smooth surfaces.



**Forklift Pocket Mast Transport Kit**  
**8530912**

Allows mast to be separated from the base and transported vertically using a forklift.



**Overload Clutch**  
**8512936**

Required to raise and lower adjustable masts with a power drill. (Drill not included)



**Counterweight Box Lifting Ring Kit**  
**8530777**

Allows counterweight box to be moved with overhead lifting equipment. Includes four rings per kit. One kit needed per counterweight system.

# Modular Jib Systems (Other Systems)

## 3M™ DBI-SALA® Flexiguard™ C-Frame System

The C-Frame System is a mobile solution designed to be positioned manually, or with the use of a tow bar (optional) and service vehicle. The freestanding design utilises protruding outriggers that extend below the work surface for stability. Available in adjustable height and fixed height models for a wide variety of applications.

- Designed to be moved manually or with a tow bar and service vehicle
- Designed to be positioned under equipment with minimal ground clearances
- Adjustable systems allow rail height to be adjusted by manually cranking the winch—allowing for passage under obstructions and building doorways



## 3M™ DBI-SALA® Flexiguard™ A-Frame System

The A-Frame System is a mobile solution designed to be positioned manually. The freestanding design straddles the work surface, taking up minimal floor space. Available in adjustable height and fixed height models, this two-user solution can be utilized for a wide variety of applications.

- System contains a single rail rated for two users
- Glide rail includes two trolleys rated for one user each
- Systems include heavy-duty leveling jacks
- Lightweight aluminum construction\*
- Portable design that can be moved easily
- Four integrated swiveling wheels

## 3M™ DBI-SALA® Flexiguard™ Trailer Mounted System

The Trailer Mounted Anchor System is a mobile solution designed to be towed with a service vehicle from application to application. This self-supported design does not require the service vehicle to be attached for use. With an adjustable anchor height of 20 ft. 6 in., and the capacity for two workers, this solution provides maximum versatility.








- Trailer mounted solutions maximise portability and versatility to and from job site.
- System quickly raises and lowers with integrated winch and handle.
- Integrated brake mechanism automatically locks the mast height in the desired position.



\* Compared to comparable steel construction.

# Supplier Considerations and Inspection Importance

## What Should Be Expected from a Responsible Supplier?

 Site survey and risk assessment	 Correct system recommendation	 Clear drawings/layouts	 Certified by manufacturer
 Documentation for audit	 Training for users	 After-sales support and annual inspection	

Avoid generic, non-certified systems and those that mix brands/non-specified components.

“Generic”, Improvised, Non-Certified Systems	Mixing Brands and Non-Specified Components
<ul style="list-style-type: none"> <li>• Unknown load ratings</li> <li>• No testing documentation</li> <li>• No traceability</li> <li>• No system warranty</li> </ul>	<ul style="list-style-type: none"> <li>• Invalidates system certification and warranty</li> <li>• Creates unknown loads</li> <li>• Complicates liability</li> </ul>



## Why is Inspection Important?

- Equipment Inspections are a vital part of a fall protection plan for the workplace.
- The fall protection plan is designed to protect both the worker and the employer.
- Without proper maintenance, any piece of equipment can become unreliable over time.
- Workers who use systems on a daily basis may not notice gradual deterioration, as there can be virtually no change from one day to the next.

1910.66 Appendix C Personal Fall Arrest Systems	EN 795:2012 – Anchor Devices EN 365 - Requirements for Maintenance and Inspection
 Obtain comprehensive instructions from supplier	 Inspected by a competent person annually

# Descent and Rescue Solutions

## 3M™ DBI-SALA® Self-Rescue Device

Work at height without worrying about hanging in your harness for an extended period of time after an arrested fall event. Instead of waiting for help, lower yourself to safety with the 3M™ DBI-SALA® Self-Rescue Device.

### Features and Benefits:

- **Easily Accessible Primary Release Cord**
- **Easy-Link SRL Adapter**  
A simple, fast connection point for your lanyards or personal SRLs.
- **Moulded Padding**  
Protects the bag from wear and tear.
- **Colour-Coded and Reflective Elements**  
Provides greater visibility, even in dark situations.
- **Assisted-Rescue and 3M™ DBI-SALA® Rescue Pole**  
Allows for remote access and deployment by a colleague.
- **15 m - 30 m Lengths**  
More flexibility and freedom to work at height worry-free.
- **15 m Training Version**

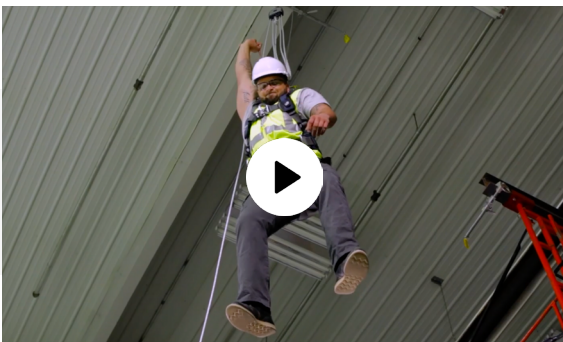
Model Number	Description
3320051	Self-Rescue Device 15 m
3320052	Self-Rescue Device 30 m
3320053	Self-Rescue Training Device 15 m
8900299	Rescue Pole with Bag



3320052



8900299



Click here or scan QR code to watch the video.

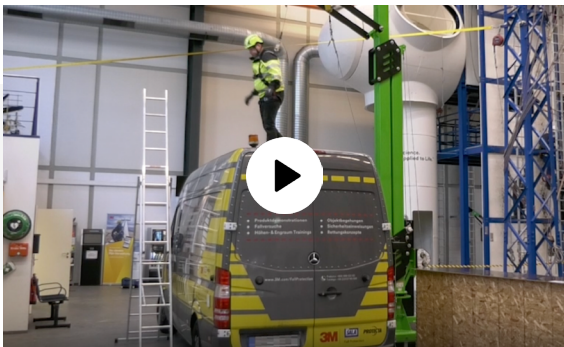
# Descent and Rescue Solutions



## 3M™ DBI-SALA® Ultra-Lok RSQ™

3M Product Number	Description
3504555	15 m, 5 mm Stainless Steel Cable



Inbuilt dual mode rescue system for assisted rescue utilising the First-Man-Up™ Pole or automatic rescue mode for Self Rescue/Descent.



Click here or scan QR code to watch the video.

## 3M™ DBI-SALA® Dual-Mode Descent

Work and rescue with the same equipment with the built-in rescue operation of our dual-mode descent technology. Lower your cost of ownership with no separate rescue equipment required.

Fall Arrest Mode	Automatic Descent Mode
<p>A speed-sensing brake stops the fall, reduces forces imposed on the user to safe levels, and allows for assisted rescue via hand, by pole, or a traditional assisted rescue operation</p> 	<p>A speed-sensing brake stops the fall, and a centrifugal brake instantly activates to lower the user at a controlled speed to the next level or ground.</p> 

# Other Fall Protection Equipment

## Body Support



### 3M™ Protecta® P200 Riggers Harness

3M Product Number	Description
1130116	Universal

3M™ Protecta P200 fall arrest harnesses provide reliable protection, comfort and convenience; now with upgraded features and a sleek, modern look – all at an affordable price.

- Quick connect buckles
- Rear fall arrest D-ring
- Front and rear adjustable chest strap
- Soft EZ-link SRL adapter



### 3M™ Protecta® P50 Riggers Harness

3M Product Number	Description
1390061A	Universal

Every at height worker deserves to be safe, no matter the size or nature of the job. That's why Protecta® products have become the choice of safety managers looking for reliable fall protection solutions that comply with safety regulations and help their workers get the job done. Industrial harness with front and rear fall arrest rated D-ring, adjustable leg and chest straps, sub pelvic Strap.

## Self-Retracting Lifelines



### 3M™ Protecta® Self-Retracting Lifeline

3M Product Number	Description
3590624	Galvanized cable - 6 m
3590625	Galvanized cable - 10 m
3590626	Stainless steel cable - 10 m
3590627	Galvanized cable - 15 m
3590628	Stainless steel cable - 15 m

Rebel SRLs are available with a heavy duty aluminium or a durable lightweight thermoplastic housing, providing an economical fall protection solution without compromising on performance or safety. Integrated ergonomic carrying handle and top swivel connector ensure easy transport and installation. Built-in fall indicator hook allows visual yearly inspection.



### 3M™ DBI-SALA® Nano-Lok™ Leading Edge Twin Leg Quick Connect Self Retracting Lifeline

3M Product Number	Description
3500255	2.4 m cable

2.4 m twin leg leading edge lifelines with 5mm galvanised steel wire rope and scaffold hooks, quick connector for harness mounting. Nano Lok™ LE is specifically designed for foot level tie off and sharp edge applications often found in construction. It is ergonomically designed for ease of use and is ideal for direct connection to most harnesses. The extremely compact and lightweight design is virtually unnoticeable on your back, staying out of the worker's way and making it ideal as a lanyard replacement. Whether your application requires single or twin leg configurations, mounting to an overhead anchor or for connection directly to harness, there are numerous models to choose from to suit almost any application. Nano Lok™ locks quickly stopping a fall within centimetres providing more protection at low heights. In addition, tension is always kept on the lifeline, which reduces dragging, snapping and trip falls. Both features are key safety improvements.

# Other Personal Protective Equipment | Respiratory Protection

Respiratory protection is required when exposed to particulate, organic vapour or acid gases during loading/unloading activities.

## Reusable Respirators



### 3M™ Secure Click™ Half Facepiece Reusable Respirator with Speaking Diaphragm HF-800SD Series

3M Product Number	Description
HF-801SD	Small
HF-802SD	Medium
HF-803SD	Large

Designed with smart and intuitive features, the 3M™ Secure Click™ Half Facepiece Reusable Respirator with Speaking Diaphragm HF-800SD Series is simple, comfortable and reliable. Available in three sizes: small, medium, and large, which all come with a speaking diaphragm.



### 3M™ Secure Click™ Cartridge D8094, A1B1E1K1P3, with Dual Flow

3M™ Secure Click™ Cartridge A1B1E1K1P3 D8094 is AS/NZS 1716 approved against certain organic vapours with a boiling point above 65° C, inorganic gases, acid gases and ammonia as well as particulates. It also offers protection against formaldehyde up to 10 ppm. Use with 3M™ Secure Click™ Reusable Respirators 800 Series. New dual flow cartridges and filters allow for easier breathing

Gas, Vapour and Particulate Filter D8094 protects against organic gases and vapours (boiling point above 65°C), inorganic gases, acid gases and ammonia as well as particulates. It also offers protection against formaldehyde up to 10 ppm Suitable for use with 3M™ Secure Click™ Reusable Respirators HF-800SD Series.

OR



### 3M™ Secure Click™ Particulate Filter D3138, P3R, with Nuisance Level Organic Vapour/Acid Gas Relief

3M™ Secure Click™ Particulate Filter P3 D3138 is AS/NZS 1716 approved for environments containing certain particles. Also, for nuisance level organic vapour relief and for ozone protection up to 10 x OEL. The 3M™ Secure Click™ Particulate Filter P3 D3138 with Nuisance Level Organic Vapour Relief helps provide respiratory protection against exposure to certain particles. The filter also offers nuisance level odour relief from organic vapours that are below the OEL. Nuisance level refers to concentrations below OEL. Please refer to the product user instructions for the limitations of use. The filter is commonly used for welding, brazing, torch cutting, metal pouring and soldering. This filter is commonly used in the following industries: agriculture, construction, general manufacturing, pharmaceuticals, primary metals.

The filter works with a 3M™ Secure Click™ Respirators HF-800SD Series. Connection system works just like a seat belt. Simply align the connections and push until you hear a click. P3 protection achieved only when worn with a 3M Full Face Respirator

## Other Personal Protective Equipment | Respiratory Protection

### Disposable Respirators



#### 3M™ Cupped Particulate Respirator 9926ANZ, P2 with Nuisance Level Acid Gas Relief, Valved

The 3M 9926ANZ disposable acid gas respirator is designed to help provide quality and reliable respiratory protection to workers from nuisance levels\* of acid gas, such as, sulphur dioxide and hydrogen fluoride. The 9926ANZ particulate respirator is compatible with other 3M personal safety products, e.g. eyewear and earplugs.

Protection factor: 10 x Workplace Exposure Standard Limit



#### 3M™ Particulate Respirator 9923V, P2, with Nuisance Level Organic Vapour Relief

The 3M 9923V is a disposable specialty respirator with a non-aluminium nose clip. The activated carbon layer reduces exposure to nuisance levels\* of organic vapour and odour, e.g. diesel particulate matter and unburned fuel vapour.



#### 3M™ Cupped Particulate Respirator 8247, GP2, with Nuisance Level Organic Vapour Relief

The lightweight, disposable GP2 particulate respirator is designed to help provide respiratory protection for certain non oil particles in applications such as welding, soldering and other operations in which metal fumes may be present. 3M uses a variety of innovative technologies and features to help you meet your respiratory protection and comfort needs. The specially designed cake resistant filter media provides longer respirator life. The respirator incorporates 3M's proprietary technology with advanced electrostatically charged microfiber filter media, designed for ease of breathing. Carbon filter material for nuisance level organic vapours\*

\*Nuisance levels are those levels below the Workplace Exposure Standard Limit

## Other Personal Protective Equipment | Hearing Protection

### Earplugs



#### 3M™ E-A-R™ Classic™ Earplugs, Corded and Uncorded Options Available

3M Product Number	Description	Rating
310-1001	Uncorded	SLC <sub>80</sub> 23 dB (Class 4)
311-1101	Corded	SLC <sub>80</sub> 21 dB (Class 3)

The 3M™ E-A-R™ Classic™ Earplugs set the industry standard for personal safety noise reduction as the worlds first foam earplug. Soft, slow-recovery foam is designed to mold to the shape of the ear canal for enhanced comfort and wearability. These disposable earplugs come with or without cords; an optional dispenser box is sold separately. A cylindrical shape is suited to fit most sizes, with a 7% smaller version also available for smaller ear canals and a 20% longer version for larger ear canals.



#### 3M™ E-A-R™ UltraFit™ Earplugs, Corded and Uncorded Options Available

3M Product Number	Description	Rating
340-4003	Uncorded	SLC <sub>80</sub> 18 dB (Class 3)
340-1004	Corded	SLC <sub>80</sub> 18 dB (Class 3)

The 3M™ E-A-R™ UltraFit™ Earplugs are made with a triple-flange design that is designed to contour to the different shapes and sizes of ear canals. This helps create a noise-blocking seal. These earplugs feature stem grips, making it easier for workers to insert these earplugs into their ears. No need to roll down or touch the portion of the earplug that goes into the ear. Pliable material can be washed and reused, cutting down costs and extending the hearing protector's life.

## Earmuffs



### 3M™ PELTOR™ X5 Earmuffs

3M Product Number	Description	Rating
X5A	Headband	SLC <sub>80</sub> 34 dB (Class 5)
X5P3GS/E	Hard Hat Attached	SLC <sub>80</sub> 33 dB (Class 5)

The 3M™ PELTOR™ X Series Earmuffs are designed for comfort and excellent noise reduction during tough jobs where loud sounds are frequent. Available in Over-the-Head and Hard Hat Attached models, they are designed to adapt the requirements of the work. Featuring an adjustable cup that angles to help create a customized fit for the worker. Electrically insulated options available.



### 3M™ PELTOR™ X4 Earmuffs

3M Product Number	Description	Rating
X4A	Headband	SLC <sub>80</sub> 32 dB (Class 5)
X4P3GS/E	Hard Hat Attached	SLC <sub>80</sub> 28 dB (Class 5)

The 3M™ PELTOR™ X Series Earmuffs are designed for comfort and excellent noise reduction during tough jobs where loud sounds are frequent. Available in Over-the-Head and Hard Hat Attached models, they are designed to adapt the requirements of the work. Featuring an adjustable cup that angles to help create a customized fit for the worker. Electrically insulated options available.

## Protective Communications



### 3M™ PELTOR™ WS™ LiteCom Pro III Headsets

3M Product Number	Description	Rating
MT73H7A4D10EU	Headband	SLC <sub>80</sub> 32 dB (Class 5)
MT73H7P3E4D10EU	Hard Hat Attached	SLC <sub>80</sub> 29 dB (Class 5)
MT73H7B4D10EU	Neckband	SLC <sub>80</sub> 30 dB (Class 5)

3M™ PELTOR™ WS™ LiteCom Pro III Headset is a hearing protector with built-in analog and digital programmable two-way communication radio (Frequency range: 403 - 470 MHz), level-dependent hearing protection, Bluetooth® functionality and a jack to connect to external devices.



### 3M™ PELTOR™ WS™ ProTac XPI Headsets

3M Product Number	Description	Rating
MT15H7AWS6	Headband	SLC <sub>80</sub> 32 dB (Class 5)
MT15H7P3EWS6	Hard Hat Attached	SLC <sub>80</sub> 27 dB (Class 5)
MT15H7BWS6-111	Neckband	SLC <sub>80</sub> 29 dB (Class 5)

The 3M™ PELTOR™ WS™ ProTac XPI Headset integrates hearing protection, Bluetooth® communication, and a noise-cancelling speech microphone to deliver a wireless, hands-free protective communication solution. The environmental listening technology assists workers in hearing environmental sounds in low noise and helps provide protection when it's loud.

3M strongly recommends personal fit testing of hearing protectors. Research suggests that users may receive less noise reduction than indicated by the attenuation label value(s) on the packaging due to variation in fit, fitting skill, and motivation of the user. Refer to applicable regulations and guidance on how to adjust attenuation label value(s). In the absence of applicable regulations, it is recommended that the attenuation label value(s) be reduced to better estimate typical protection. The effectiveness of a hearing protector reduces dramatically when the hearing protector does not fit properly, is incorrectly inserted or is not worn 100% of the time during ALL hazardous noise events. Removal of the hearing protector, even for brief moments, substantially reduces protection and greatly increases the risk of hearing damage.

## Other Personal Protective Equipment | Head Protection



We design and manufacture hard hats and accessories to meet a diverse spectrum of needs. From safety helmets for working at height, to full-brim hard hats and solutions for working in elevated temperatures, we offer consistently reliable products.



### 3M™ TA570 Safety Helmet ABS Vented

The Australian made TA570 is a vented ABS Type 1 safety helmet ideal for general industrial, construction and mining applications. The unique crown cooling vented safety helmets ensure cooler and more comfortable protection in hot humid conditions. The safety helmet design allows multiple branding and reflective tape options. Certified to AS/NZS 1801:1997



### 3M™ TA560 Safety Helmet ABS

The Australian made TA560 is a non-vented ABS Type 1 safety helmet ideal for general industrial, construction and mining applications. The safety helmet design allows multiple branding and reflective tape options. Certified to AS/NZS 1801:1997

## Other Personal Protective Equipment | Eye Protection



3M Protective Eyewear is designed to deliver comfort and performance, helping to keep workers safe. Featuring optional 3M™ Scotchgard™ Anti-fog Coating, which resists fog up to 11x longer than traditional 3M anti-fog coating, and proprietary 3M™ SecureFit™ Pressure Diffusion temple technology that self-adjusts to the wearer's head size and shape.



### 3M™ Solus™ Protective Eyewear 1000 Series

- Resists fogging longer than traditional anti-fog coatings through up to 25 washings with water\*
- Helps provide scratch resistance in tough work environments
- Designed for working in challenging situations, such as hot and humid conditions, indoor/outdoor work, physically demanding tasks and climate-controlled areas
- Polycarbonate Lenses and Contemporary styling with soft nose bridge for added comfort
- U6 rated polycarbonate lenses absorb 99.9% of UVA and UVB
- Certified to AS/NZS 13371:2010



### 3M™ SecureFit™ Protective Eyewear 500 Series

3M™ SecureFit™ 500 Series features a contemporary lens design coupled with adjustable ratcheting temples and Pressure Diffusion Temple technology to help provide a more personalized fit. The flat and flexible temple design combines well with 3M PELTOR Hearing and Communications equipment. A variety of lens tints and models with 3M™ Scotchgard™ Protector Anti-Fog Coating, which resists fog 11x longer and has 7x better anti-scratch performance than traditional 3M anti-fog coating, are offered. Some models available with foam gasket to help limit eye exposure to debris. Certified to AS/NZS 13371:2020

# Education and Training



Your needs are at the core of what we do. That's why 3M offers worker health and safety training on principles, hazards, PPE products, software and other valuable information to enhance your workplace safety initiatives. Remember that safety goes beyond simply providing access to PPE – workers must also be trained in its proper wear and use. Our resources can help you ensure they have access to vital information about their PPE.

Explore our digital library on the Worker Health & Safety Portal for [Australia](#) and [New Zealand](#) at the 3M Safety Academy for topics like respiratory protection, welding, hearing conservation, fall protection, and more.

It's just one more way 3M helps you and your workers stay connected, compliant and safe.



**Ready to learn more?**  
Scan or Click for more details.

## What's the 3M difference?

- ▶ Digital Training Library
- ▶ Dedicated Instructors
- ▶ Instructor-Led Courses
- ▶ Certified Instructor Program
- ▶ Regulatory Standards Compliance (where applicable)
- ▶ Training Centers, On-Site Delivery, or Virtual Instructor-Led Training
- ▶ Broad Employee Appeal

## Training and education may be provided by 3M\*:

- ▶ Demonstration Training
- ▶ Fit Testing
- ▶ Selection Guides
- ▶ Service Life Software
- ▶ Fall Protection
- ▶ Hearing Protection and Conservation
- ▶ Worker Health and Safety e-Learning
- ▶ Virtual Reality
- ▶ Seminars, Webinar and Videos
- ▶ Understanding Regulations/Compliance
- ▶ Tech Bulletins, Technical Helpline
- ▶ Dedicated Application Engineers etc.
- ▶ 3M™ Safety Mobile Training Units

AU

NZ



**Scan or click the QR code**  
to contact us for a consultation or demo.

## Hearing Protection

### WARNING

These hearing protectors help reduce exposure to hazardous noise and other loud sounds. Misuse or failure to wear hearing protectors at all times that you are exposed to noise may result in hearing loss or injury.

## Eye Protection

### WARNING

These eye or face protection products help provide limited eye and face protection. Misuse or failure to follow warnings and instructions may result in serious potential injury, including blindness or death. For proper use, selection and applications against flying particles, optical radiation and/or splash see supervisor, read User Instructions and warning on the package or contact 3M PSD Customer Service in Australia at 1300 363 565 or 3msupport.safety.au@mmm.com and in New Zealand at 0800 252 627 or 3msupport.safety.nz@mmm.com.

## Head Protection

### WARNING

3M Head and Face Products provide limited protection only. Misuse or failure to follow warnings and User Instructions may result in serious personal injury or death. For proper use, see supervisor, User Instructions, or contact 3M PSD Customer Service in Australia at 1300 363 565 or 3msupport.safety.au@mmm.com and in New Zealand at 0800 252 627 or 3msupport.safety.nz@mmm.com.

## Fall Protection

### WARNING

Compliant fall protection and emergency rescue systems help prevent serious injuries associated with fall events. Users must read and understand the User Instructions provided with the product, and must be properly trained by their employers in the safe use of these systems before using them, per AS/NZS 1891.4:2009. Misuse or failure to follow warnings and instructions may result in serious personal injury or death. For proper use, see supervisor, User Instructions, or contact 3M PSD Customer Service in Australia at 1300 363 565 or 3msupport.safety.au@mmm.com and in New Zealand at 0800 252 627 or 3msupport.safety.nz@mmm.com.

## Respiratory Protection

### WARNING

These respirators help to protect against certain airborne contaminants. Before use, the wearer must read and understand the User Instructions provided as part of the product packaging. A written respiratory protection program must be implemented meeting all the requirements of AS/NZS 1715 or SA/SNZ ISO 16975.1 including training, fit testing and medical evaluation. Improper use may result in sickness or death. For correct use, see supervisor and User Instructions, or contact 3M PSD Customer Service in Australia at 1300 363 565 or 3msupport.safety.au@mmm.com and in New Zealand at 0800 252 627 or 3msupport.safety.nz@mmm.com.

**Product Selection and Use:** Many factors beyond 3M's control and uniquely within user's knowledge and control can affect the use and performance of a 3M product in a particular application. As a result, customer is solely responsible for evaluating the product and determining whether it is appropriate and suitable for customer's application, including conducting a workplace hazard assessment and reviewing all applicable national and/or European regulations and standards. Failure to properly evaluate, select, and use a 3M product in accordance with all applicable instructions and with appropriate safety equipment, or to meet all applicable safety regulations, may result in injury, sickness, death, and/or harm to property.

**Warranty:** Warranty conditions for 3M products are determined with the sales contract documents and with the mandatory and applicable clause, excluding any other warranty or compensation.

**For industrial/occupational use only. Not for consumer sale or use.**



#### **3M Australia Pty Ltd**

Bldg A, 1 Rivett Road  
North Ryde NSW 2113  
Customer Service: 1300 363 565  
Web: www.3M.com.au/ppesafety

#### **3M New Zealand Limited**

94 Apollo Drive  
Rosedale, Auckland 0632  
Customer Services: 0800 252 627  
Web: 3M.com/nz/ppesafety

3M, E-A-R, DBI-SALA, Protecta, Secure Click, E-A-R, PELTOR, Solus, and SecureFit are trademarks of 3M. Used under license by 3M subsidiaries and affiliates. All other trademarks herein are property of their respective owners.  
© 3M 2026. All rights reserved.